

INSPIRE.

A Centennial Campaign for the Rose Bowl Stadium

INSPIRED BY THE PAST.

INSPIRING THE PRESENT.

INSPIRATION FOR THE FUTURE.



HISTORICAL MARKER HONORING
COACH EDDIE ROBINSON
AT THE ROSE BOWL STADIUM

Legendary Coach Eddie Robinson coached Grambling State to a win in the Pasadena Bowl, also known as the Junior Rose Bowl, in 1968 at the iconic Rose Bowl Stadium in Pasadena.

For 56 years, from 1941 to 1942 and again from 1945 to 1997, he was the head coach at Grambling State University, a historically black university (HBCU) in Grambling, Louisiana. Robinson is recognized by many college football experts as one of the greatest coaches in history.

During a period in college football history when black players were not allowed to play for southern college programs, Robinson built Grambling State into a "small" college football powerhouse. He retired in 1997 with a record of 408–165–15. Robinson coached every single game from the field and was inducted into the College Football Hall of Fame in 1997.

Robinson is arguably the most successful college football coach in FCS history and third most victories in college football history.

We respectfully request your consideration of making a gift to recognize this huge moment for Grambling State and the Rose Bowl Stadium. - it is a key part of the heritage at America's Stadium.

"The will to win, the desire to succeed, the urge to reach your full potential ... these are the keys that will unlock the door to personal excellence."

- Coach Eddie Robinson



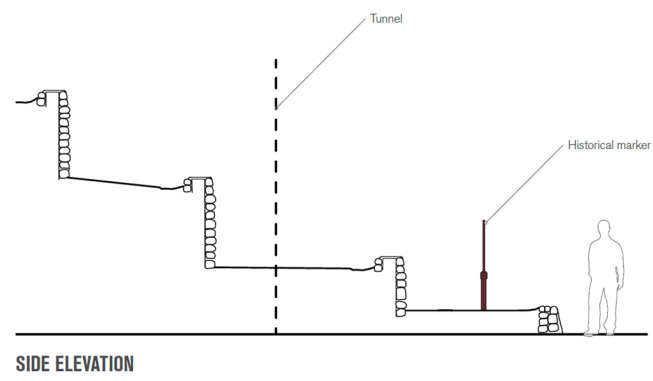
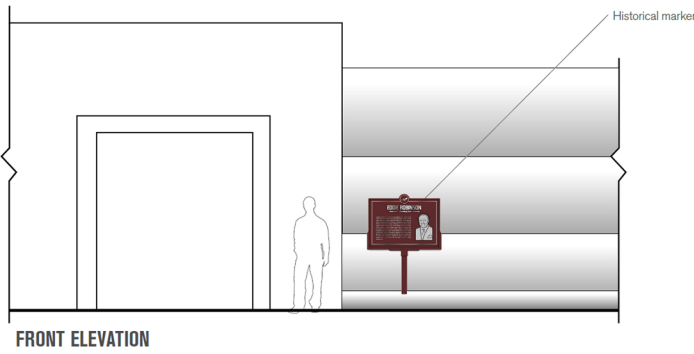
TAX ID # 01-0972999

THE ROSE BOWL STADIUM, AMERICA'S STADIUM, HAS AUTHORED COUNTLESS ICONIC AND INSPIRATIONAL MOMENTS, MANY OF WHICH HINGE ON THE MEMORIES OF THE ROSE BOWL GAME, THE 'GRANDDADDY OF THEM ALL'

EDDIE ROBINSON

Head Coach – Grambling State University

Coached Grambling to a win in the Pasadena Bowl, known as the Junior Rose Bowl in 1968 at the iconic Rose Bowl Stadium. For 56 years, from 1941 to 1942 and again from 1945 to 1997, he was the head coach at Grambling State University, a historically black university (HBCU) in Grambling, Louisiana. Robinson is recognized by many college football experts as one of the greatest coaches in history. During a period in college football history when black players were not allowed to play for southern college programs, Robinson built Grambling State into a "small" college football powerhouse. He retired in 1997 with a record of 408-165-15. Robinson coached every single game from the field and was inducted into the College Football Hall of Fame in 1997. Robinson is arguably the most successful college football coach in FCS history and third most victories in college football history.



LOCATION

Aluminum metal-photo plate. Raised photo, text and accents.

THE HISTORICAL SIGNIFICANCE OF PARTICULAR ICONS AND MOMENTS THAT HAVE DEFINED THE ICONIC TIMELINE OF THIS NATIONAL HISTORIC LANDMARK DESERVE TO BE CELEBRATED AND PORTRAYED FOR EDUCATIONAL AND INSPIRATIONAL PURPOSES.